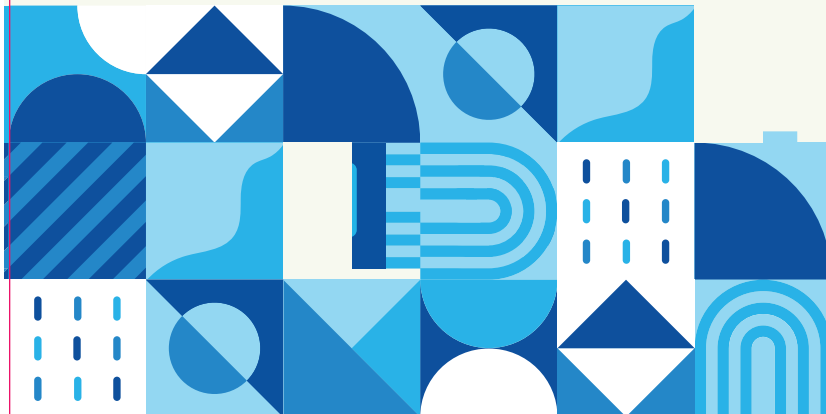


# BLUE SPRINKLES

ADOURNE<sup>™</sup>  
EXPRESSIONS



NET WEIGHT  
10 LBS  
(4.54 KG)

COLOR



SHAPE



PRODUCT OF COSTA RICA

MANUFACTURED FOR  
CLARK CORE SERVICES, LLC,  
LANCASTER, PA 17602

STORE IN A COOL DRY PLACE  
BETWEEN 50-70°F

## Nutrition Facts

1134 servings per container

**Serving Size** 1 tsp (4g)

**Amount per serving**

**Calories** 20

	% Daily Value*
<b>Total Fat</b> 1g	1%
Saturated Fat 0.5g	3%
Trans Fat 0g	
<b>Cholesterol</b> 0mg	0%
<b>Sodium</b> 0mg	0%
<b>Total Carbohydrate</b> 3g	1%
Dietary Fiber 0g	0%
Total Sugars 3g	
Includes 3g Added Sugars	6%
<b>Protein</b> 0g	0%
Vitamin D 0mcg	0%
Calcium 0mg	0%
Iron 0mg	0%
Potassium 0mg	0%

The % Daily Value (DV) tells you how much a nutrient in a serving of food contributes to a daily diet. 2,000 calories a day is used for general nutrition advice.

Calories per gram:

Fat 9 • Carbohydrate 4 • Protein 4

**INGREDIENTS:** Sugar, Hydrogenated Palm Kernel Oil, Corn Starch, Sunflower Lecithin, FD&C Colors Blue #1 Lake, Maltodextrin, Carnauba Wax, Vanillin, Cellulose Gum



#711SPRNKLEBL

