



**atalanta**  
Delivering the Global Harvest

## Product Specification Sheet Grocery

**Product Name:** "Del Destino" Sundried Tomatoes, Strips 4/5 Lbs

<b>Item Number:</b>	<b>345275</b>	<b>Country of Origin:</b>	<b>Turkey</b>
<b>Pack Size:</b>	<b>4 /5 LB</b>	<b>Shelf Life Unopened/Opened:</b>	<b>24 Months/2 Months Refrigerated</b>
<b>Unit Net Weight:</b>	<b>5 Lbs (80 Oz) 2.27 Kg</b>	<b>Unit Drain Weight:</b>	<b>N/A</b>

**UPC :** 0 71270 30003 9

**Case/Package Code:**

**15-11506-65**

**XX5275 18 061 AV**

**BEST BY: 03/02/2020**

**15:00**

**GTIN :** 400 71270 30003 7

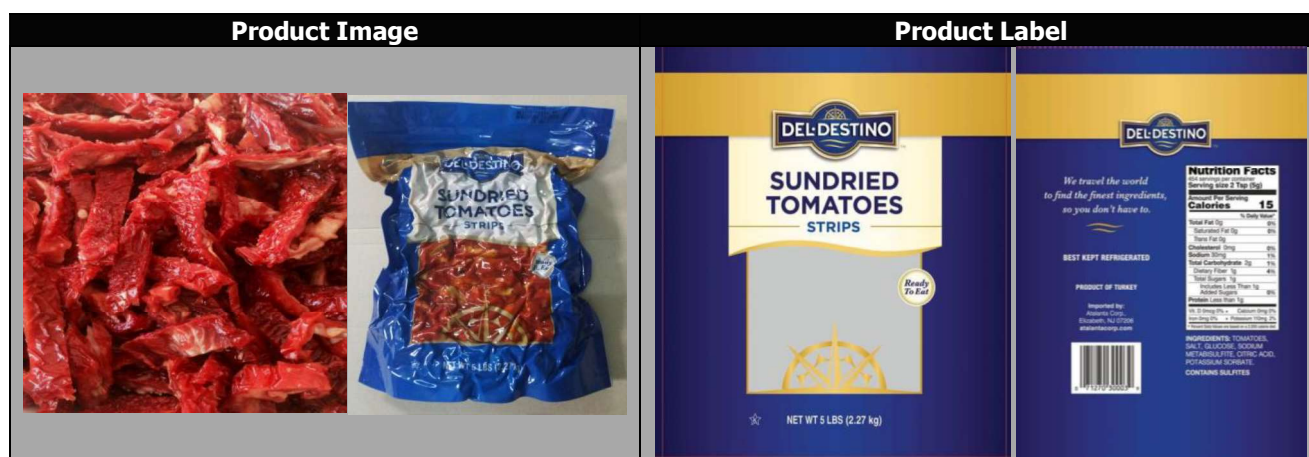
**Unit Can Code/Coding Format:**

**PO number**

**Item year day producers code**

**Best by: month/day/year**

**Hour**



### Product Properties

#### Product Description:

Fresh tomatoes cut, halved and sundried under controlled conditions salt and sulphur is added according to customer specs. Washed with microbiologically controlled water and inspected before packaging

#### Ingredient Statement:

**TOMATOES, SALT, GLUCOSE, SODIUM METABISULFITE, CITRIC ACID, POTASSIUM SORBATE.**

#### CONTAINS SULFITES

<b>Kosher (Y/N; type)</b>	<u>Y; STAR K</u>
<b>GMO Free (Y/N)</b>	<u>Y</u>
<b>BPA NI (Y/N); Lid, Can, Jar, Environmental</b>	<u>N</u>
<b>Organic (Y/N; type)</b>	<u>N</u>
<b>Pieces Count (per package)</b>	<u>-</u>
<b>Easy Open (Y/N; type)</b>	<u>Y</u>
<b>Piece Fragments (Range ; %)</b>	<u>N/A</u>

#### Physical Properties:

<b>Color</b>	<u>Bright red to red</u>
<b>Aroma &amp; Flavor</b>	<u>Characteristic of sun dried tomatoes, no off-odors or flavors</u>
<b>Texture</b>	<u>Soft and easy to eat</u>
<b>Appearance</b>	<u>Clean, without any foreign matter</u>
<b>Size &amp; Shape Range (mm)</b>	<u>Length (30-50 mm), Width (7-12 mm)</u>
<b>Vacuum</b>	<u>Yes</u>

**Chemical Properties:**

**pH (range)**  
**Titration Acidity (range)**  
**°Brix (range)**  
**Salt Percentage – Volhard Method (range)**  
**Sulfur Dioxide (range)**  
**% Moisture (range)**  
**Free Fatty Acid Value**  
**Peroxide Value**

Minimum	Maximum	Target
4.0	5.0	4.3
2.0	3.0	2.5
N/A	N/A	N/A
2.8%	3.6%	3%
2000 ppm	3000 ppm	2500 ppm
38	42	40
N/A	N/A	N/A
N/A	N/A	N/A

**Microbiological Properties:**

**Total Plate Count**  
**Yeast and Molds**  
**Coliforms**  
**Staphylococcus, coagulase positive**  
**E.Coli**  
**Listeria**  
**Salmonella**

<100,000 cfu/g
<5000 cfu/g
<10 cfu/g
NA
None
NA
NA

**Nutritionals**  
 (\*Daily Value % (DV%) Based on a 2,000 Calorie Diet)

**Serving Size:**

(As listed on Label)

**Servings Per Container:****2 tsp (5g)****454 servings**

**Per Serving**      **DV%**

**Calories:****Total Fat (g)**

\*Changed from 65-78g :

**Saturated Fat (g):****Trans Fat (g):****Cholesterol (mg):****Sodium (mg)**

\*Changed from 2,400–2,300mg\*

**Total Carbohydrate (g)**

\*Changed from 300-275g\*

**Dietary Fiber (g)**

\*Changed from 25-28g :

**Total Sugars (g):****Added Sugars****Protein (g):****Vitamin D (mcg)**

\*Changed from 400IU (10µg) – 20µg\*

**Calcium (mg)**

\*Changed from 1,000–1,300mg\*

**Potassium (mg)**

\*Changed from 3,500-4,700mg\*

**Iron (mg):**

15	
0	0%
0	0%
0	
0	0%
30	1%
2	1%
1	4%
1	
Less than 1g	0%
Less than 1g	
0	0%
0	0%
110	2%
0	0%

**Serving Size:****Servings Per Container:****100g****About 23**

**Per Serving**      **DV%**

**Calories:****Total Fat (g)**

\*Changed from 65-78g :

**Saturated Fat (g):****Trans Fat (g):****Cholesterol (mg):****Sodium (mg)**

\*Changed from 2,400–2,300mg\*

**Total Carbohydrate (g)**

\*Changed from 300-275g\*

**Dietary Fiber (g)**

\*Changed from 25-28g :

**Total Sugars (g):****Added Sugars****Protein (g):****Vitamin D (mcg)**

\*Changed from 400IU (10µg) – 20µg\*

**Calcium (mg)**

\*Changed from 1,000–1,300mg\*

**Potassium****(mg)**

\*Changed from 3,500-4,700mg\*

**Iron (mg):**

300	
0	0%
0	0%
0	
0	0%
600	20%
40	20%
20	80%
20	
3	6%
<20	
0	0%
0	0%
2117	45%
0	0%

\*Please note that changes in the Daily Values amounts and Nutrients declared. Serving Sizes has also changed for many commodities, please reference the attached document for appropriate serving size.

**Packaging****Individual Unit****Dimension:**

10.75 x 13.97 in

**Case Gross Weight:**

21 Lbs

**Case Dimensions (in):** 19"(L) x 12.5"(W) x 4.5" (H)**Storage Practice:**

Store unopened product in a cool and dry place out of direct sunlight.

<b>Case Cube (ft<sup>3</sup>):</b>	0.6185
<b>Block &amp; Tier:</b>	8 x 10
<b>Cases Per Pallet:</b>	80

<b>Storage Temperature:</b>	40 – 80 °F
<b>Shipping Temperature:</b>	40 – 80 °F

### Allergen List

The first column indicated the allergens that may be found in the product, either by addition or by cross contamination. The second column indicates the allergens that are present in other products that are run on the same equipment but at a different time, in the plant. The third column indicates whether any of those ingredients are present in the plant.

Each square is answered with a YES or NO and, when applicable, the name of an ingredient.

<b>Components</b>	<b>Present in Product</b>	<b>Present in Other Products Manufactured on the Same Line</b>	<b>Present in the Same Manufacturing Plant</b>
<b>Peanuts (including peanut oil)</b>	No	No	No
<b>Tree Nuts</b>	No	No	No
<b>Sesame Seeds</b>	No	No	No
<b>Milk &amp; derivatives (Specify: milk, casein, whey, etc)</b>	No	No	No
<b>Eggs</b>	No	No	No
<b>Fish</b>	No	No	No
<b>Shellfish</b>	No	No	No
<b>Soy (excluding soy oil)</b>	No	No	No
<b>Wheat (Gluten)</b>	No	No	No
<b>Sulphites</b>	<b>Yes</b>	<b>Yes</b>	<b>Yes</b>
<b>Corn</b>	No	No	No
<b>Poppy Seeds</b>	No	No	No
<b>Sunflower Seeds</b>	No	No	No
<b>MSG (monosodium glutamate)</b>	No	No	No
<b>Tartrazine</b>	No	No	Yes

### Case Label

<div style="display: flex; justify-content: space-between; align-items: center;"> <div style="text-align: center;"> <p><b>BEST KEPT REFRIGERATED</b></p> <p>4 00 71270 30003 7</p> </div> <div style="text-align: center;"> <p><b>SUN-DRIED TOMATOES STRIPS</b></p> </div> <div style="text-align: center;"> <p><b>4/5 lbs.</b></p> </div> </div> <p>IMPORTED BY: ATALANTA CORP. ELIZABETH, NJ 07206</p> <p>Country of Origin: <u>TURKEY</u></p> <p>S.I. No : _____</p> <p>Can Code: _____</p>			

Supplier No.	S041
Manufacturer No.	S041
Audit / Expiry Date	BRC/MAY2020